



## ULTRA CORRUGATED

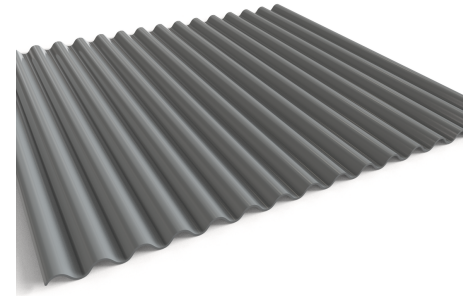


### PRODUCT FEATURES

Corrugated metal panels are one of the original metal panels used for roofing and siding, and are often revered for their timeless aesthetic. Featuring a repeating sine-wave design, the Ultra-Corrugated panel can be installed vertically or horizontally, providing a highly versatile option for any project.

Ultra-Corrugated is quickly and easily installed with exposed fasteners over a solid substrate or open framing members. Featuring extraordinary structural stability, the Ultra-Corrugated panel is a long-lasting panel designed to weather the elements.

Ultra-7.2 Box Rib panels are offered in all CMG standard finishes as well as Bonderized, A606 Corten, and Galvalume Plus. Please contact Coated Metals Group for complete test results, load tables, and specifications.



#### VERSATILE DESIGN

Ultra-Corrugated Panels can be installed vertically or horizontally in wall applications. These panels may also be used for roofing



#### EASY INSTALL

Exposed fasteners and wide panel coverage make CMG's Ultra-Corrugated Panels a quick and efficient install for roof and wall panel projects



#### TIMELESS DESIGN

Ultra-Corrugated panels are one of the most popular roofing and wall panels offered. The sine-wave profile compliments classic and modern designs



Phone.  
(800) 784-0356



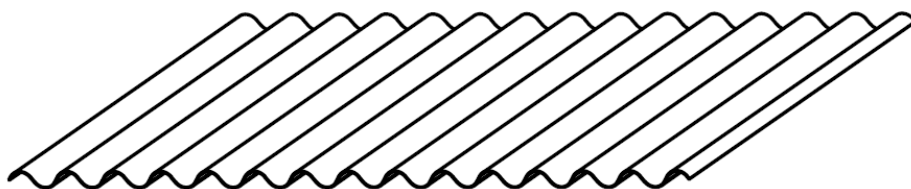
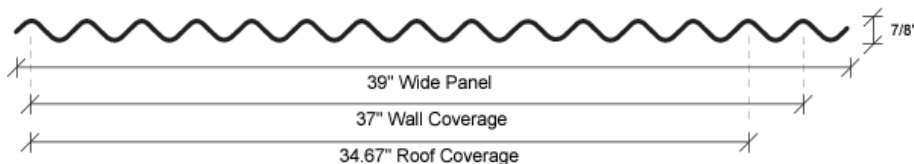
Email.  
info@cmgmetals.com



Address.  
300 Yard Drive, Verona, WI 53593



## ULTRA CORRUGATED



### FASTENING GUIDE

<b>CORRECT</b>	<b>OVER DRIVEN</b>	<b>UNDER DRIVEN</b>
Neoprene washer is tight to panel with slight compression	Neoprene washer is misshapen and extends beyond fastener head	Neoprene washer is not compressed to form weathertight seal

### PANEL OPTIONS

- 39" Panel Width
- Panel Length Cut to Specification
- 22ga - 26ga Pre-Finished Steel
- 22ga - 26ga Galvalume
- 22ga - A606 Corten

### APPLICATIONS

- Roof, Wall, Soffit, Fascia
- Horizontal or Vertical Installation Orientation
- Residential, Commercial, Agricultural, etc.
- Solid Substrate or Open Framing

### ACCESSORIES

- S-5! Snow Retention Systems
- S-5! Solar Attachment Systems
- Color-Matched Roof Sealants
- Ice and Water Shield Underlayment
- Factory Recommended Fasteners
- Foam Closure Strips

[www.cmgmetals.com/ultra-corrugated](http://www.cmgmetals.com/ultra-corrugated)



Please refer to [www.cmgmetals.com](http://www.cmgmetals.com) for load charts, panel test data, standard details, and further information. Colors shown may not accurately reflect actual materials. All colors should be verified using actual metal samples. Oil-canning is an inherent property of metal roofing and is not cause for rejection. For installation practices and weathertightness warranty information, please contact your local sales representative.

Phone.  
(800) 784-0356

Email.  
[info@cmgmetals.com](mailto:info@cmgmetals.com)

Address.  
300 Yard Drive, Verona, WI 53593